

## For sale semi-detached house, in Palau-Saverdera, Costa Brava

Ref: VC237



### Characteristics:

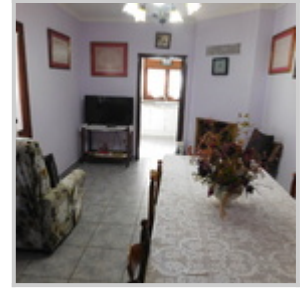
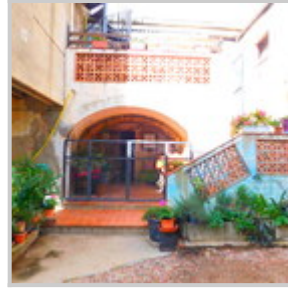
- Surface: 244m<sup>2</sup>
- Plot size: 214m<sup>2</sup>
- Bedrooms: 2
- Bathrooms: 1
- Address: [Palau Saverdera](#)
- Price: **370.000 €**

### Description:

For sale semi-detached house that faces two streets, the main one of the town and its garden on a very quiet one. With the shops just 80m away, the pharmacy next door, two bars less than 50m away, this property is located in the heart of the Palau Saverdera town.

With a plot of 214m<sup>2</sup>, this property consists of 244m<sup>2</sup> built divided into two open floors. On the ground floor we find an open space and on the first floor the main house is distributed with two double bedrooms, 1 full bathroom, double living room with fireplace and large kitchen.

With a 100m<sup>2</sup> garden, enjoy 120m<sup>2</sup> of ground floor where you can make your hobbies a reality or have a second home if you wish.



© 2026 GMID IMMO  
Avda. de Rhode 6  
17480 - Roses  
Girona

Tel: (+34) 972 150 149  
[info@immogmid.com](mailto:info@immogmid.com)